



Tomlinson Equine

Vet Practice & Stud

Situated in the Cotswolds, Tomlinson Equine (formerly Beaufort Embryo Transfer) is a leader in the field of Equine Breeding. Established in 2002, this highly successful equine reproduction centre is run by well respected equine vet, Emma Tomlinson. Boasting excellent success rates with a very high quality of service covering all aspects of breeding working including Artificial Insemination, Embryo Transfer, OPU/ICSI, Weaning/Foaling Down and Stallion Services. Tomlinson Equine has a full team of experienced vets, stallion handlers and other, all-important, equine staff. It is an APHA Approved Semen Collection and Freezing centre as well as the UK's first APHA Approved Embryo Collection and Freezing centre. Tomlinson Equine also has a several top-class Stallions standing at the centre.



01666 880236



info@tomlinsonequine.co.uk



www.tomlinsonequine.co.uk

Tomlinson Equine

Vet Practice & Stud





01666 880236



info@tomlinsonequine.co.uk



www.tomlinsonequine.co.uk

Tomlinson Equine



Vet Practice & Stud

Tomlinson Equine Ovum Pick Up (OPU) & ICSI services run Autumn - Spring

What is OPU?

Ovum Pick Up (followed by ICSI and Embryo Transfer) is a procedure where oocytes (eggs) are recovered from your mare's ovaries. The recovered oocytes are then sent to a specialist lab (located in Europe) where they are matured and subjected to "in vitro" fertilisation (ICSI) with semen from a stallion that is chosen by you. Any viable embryos produced after a period of 7-9 days can be frozen and transported back to the UK for subsequent transfer into a recipient mare. (See *Embryo Transfer services*).



Why Choose OPU?

Ovum Pick Up (OPU) is beneficial for a number of reasons including in high-level competition mares with busy schedules as it avoids the necessity for repeat scans & time involved with AI & ET. Mares with a history of uterine infections, oviduct problems or other infertility issues can also benefit from OPU/ICSI to increase their fertility. It is also very useful where semen is limited from a particular stallion due to infertility or death, since only a fraction of a frozen semen straw is required for the ICSI procedure. Another application of OPU & ICSI is where frozen embryos are desired since ICSI-produced embryos have a much higher post-thaw pregnancy rate compared with conventionally flushed embryos. It is also possible to sex ICSI-produced embryos before freezing and transferring. Ideally though, OPU should only be performed if other methods of Artificial Breeding have been tried and were unsuccessful due to the slightly increased risk of complications (e.g. peritonitis or abdominal pain) compared to other breeding methods.



01666 880236



info@tomlinsonequine.co.uk



www.tomlinsonequine.co.uk

Tomlinson Equine



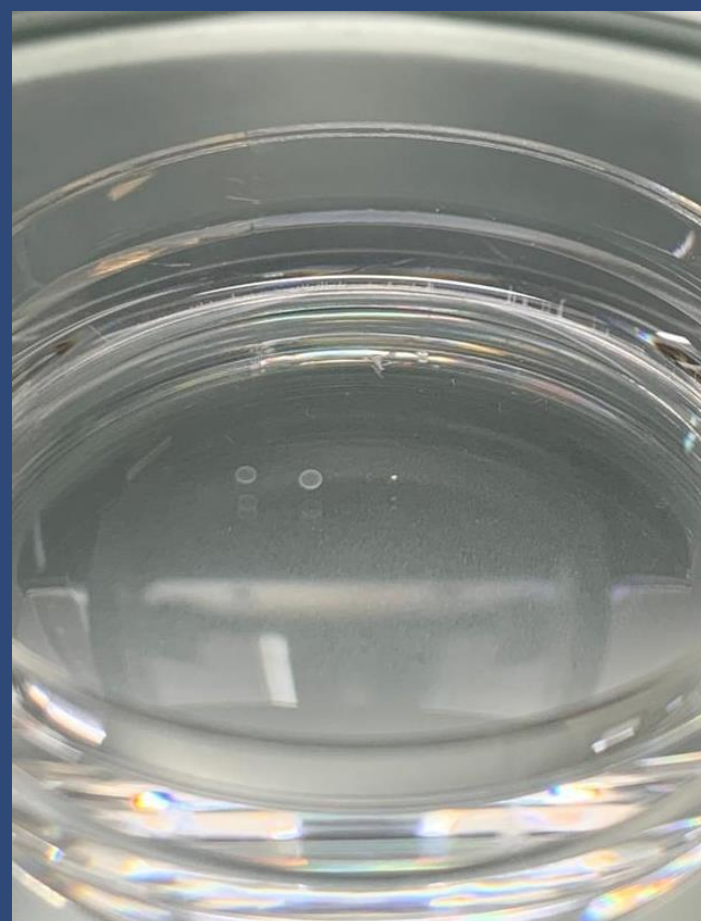
Vet Practice & Stud

The Procedure

OPU is performed on a day case “walk-in” basis (although we prefer mares to stay for a few days either side of the procedure for optimal monitoring). The only involvement your mare will have in the breeding process is when she undergoes the OPU procedure, which usually takes a few hours as well as a scan or 2 prior to the OPU session. Using a specially adapted ultrasound probe (with an aspiration needle attached) placed in your mare’s vagina, the follicles on your mare’s ovaries are aspirated in order to retrieve the oocytes. Since the oocyte recovery rate is never 100%, your mare needs multiple follicles over a certain size in order to proceed with an OPU session. This is established in the scanning session(s) prior to the OPU procedure.

Intra-cytoplasmic Sperm Injection (ICSI) is the only method of IVF available in horses and is carried out in specialist laboratories in Europe. The resultant embryos are grown in the lab and if they are of good enough quality to be frozen & transported back to us, we are able to use your own recipient mare to transfer the embryo and carry the pregnancy.

Tomlinson Equine Embryo Transfer Services



Embryo Transfer

We are proud to be one of the few high level reproduction centres in the UK, and we believe the success of Tomlinson Equine is due to our team always striving for further improvement, development and continually being on top of new advancing techniques being introduced into the reproduction industry. Equine Embryo Transfer (ET) is the collection of an embryo (typically 8 days post-ovulation) from the uterus of a genetically desirable mare (the Donor) is transferred into the uterus of a reproductively competent mare (the Recipient) which then carries the pregnancy to term and nurtures the foal until weaning. The resulting foal’s genetics are derived from the donor mare and stallion (exactly the same as natural breeding); the recipient merely takes the foal from embryo stage, through pregnancy and birth to weaning and has no genetic influence on the foal.



01666 880236



info@tomlinsonequine.co.uk



www.tomlinsonequine.co.uk

Tomlinson Equine



Vet Practice & Stud

Synchrony

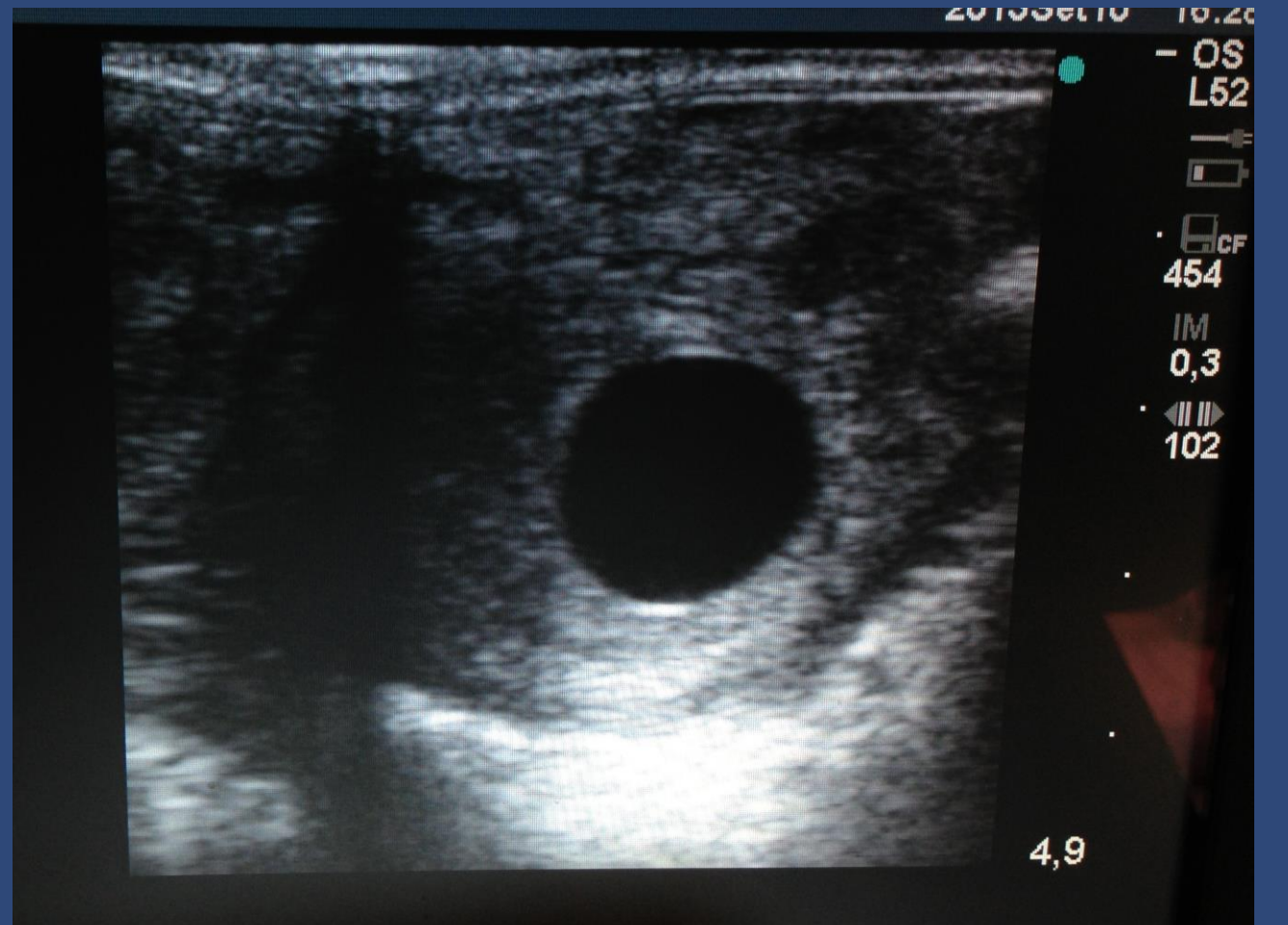
Prior to the donor mare's ovulation, we synchronise mares from our recipient herd to ensure they are in synch with the donor mare's cycle. We can either do this onsite while scanning both the donor mare and recipient.

Alternatively we can liaise with a reproductively competent vet scanning the donor mare offsite. This is arguably the most important aspect to ensure a successful Embryo Transfer can take place. It is important that the external vet lets us know the details of each scan and waits for us to confirm before injecting the donor mare as synchrony is recipient mare (not donor mare) led.



AI

Once the mare arrives at the centre we monitor her cycle by routine ultrasound scanning of her ovaries and uterus, to ensure Artificial Insemination is carried out at the optimum time. If your mare is coming to our centre for a walk-in flush, she will be monitored by your own (reproductively competent) vet, who will need to liaise closely with us about the mare's cycle in order that we can synchronise recipients accordingly.



Flushing

Around 8 days post ovulation, the mare undergoes a non-surgical uterine flushing. The flushing medium passes through a very fine filter and the resulting fluid is examined under a microscope for the presence of an embryo. The donor mare is not signed off the embryo transfer program until post-flushing scans have confirmed that the uterus is in a good condition, and she is cycling correctly. Some donors remain at the centre for further embryo transfer cycles, or the donor mare can leave the centre when she has been reproductively signed off by a vet post-flushing.

Transfer

After searching and examining, the embryo is washed and transferred into a small straw, which is then put into a transfer gun. Using the transfer gun, the embryo is placed into the uterus of a suitably synchronized recipient mare.

Why Choose Embryo Transfer?

Embryo Transfer (ET) allows you to breed from a high class, proven, competing mare without interrupting her competition schedule. Embryo Transfer also allows a breeder to produce more than one foal from a mare in any one breeding season; multiple offspring can be by the same or differing stallions. Embryo Transfer is also used to overcome some uterine based infertility and is also used in mares that are considered too old to carry a pregnancy themselves, or too valuable to undergo the risks of pregnancy and foaling. With many Breeders opting for Embryo Transfer, it is important for those who are looking into it to understand its fundamental principles. Embryo Transfer favours breeding from superior quality mares, which in turn improves the standard of British bred Sport Horses.



01666 880236



info@tomlinsonequine.co.uk



www.tomlinsonequine.co.uk

Tomlinson Equine



Vet Practice & Stud

Referral Service Options:

Complete ET Package: Clients can come to our centre for all stages of Embryo Transfer: From AI through to 42 Day Pregnancy, foaling down, and weaning.

Walk-In Flushes: Mares can come to us for a walk-in flushing having been inseminated by an external vet closer to home.

Transported Embryos: We receive Transported Embryos to be transferred into a suitable recipient mare from our herd, having been synchronised by our highly trained reproduction vets. This allows mares to stay closer to home for insemination and flushing. For both Transported Embryos and Walk-In flush referrals, we liaise closely with suitably competent reproduction vets to manage both the AI and non-surgical flush, so we can ensure suitably synchronised recipient mares are available.

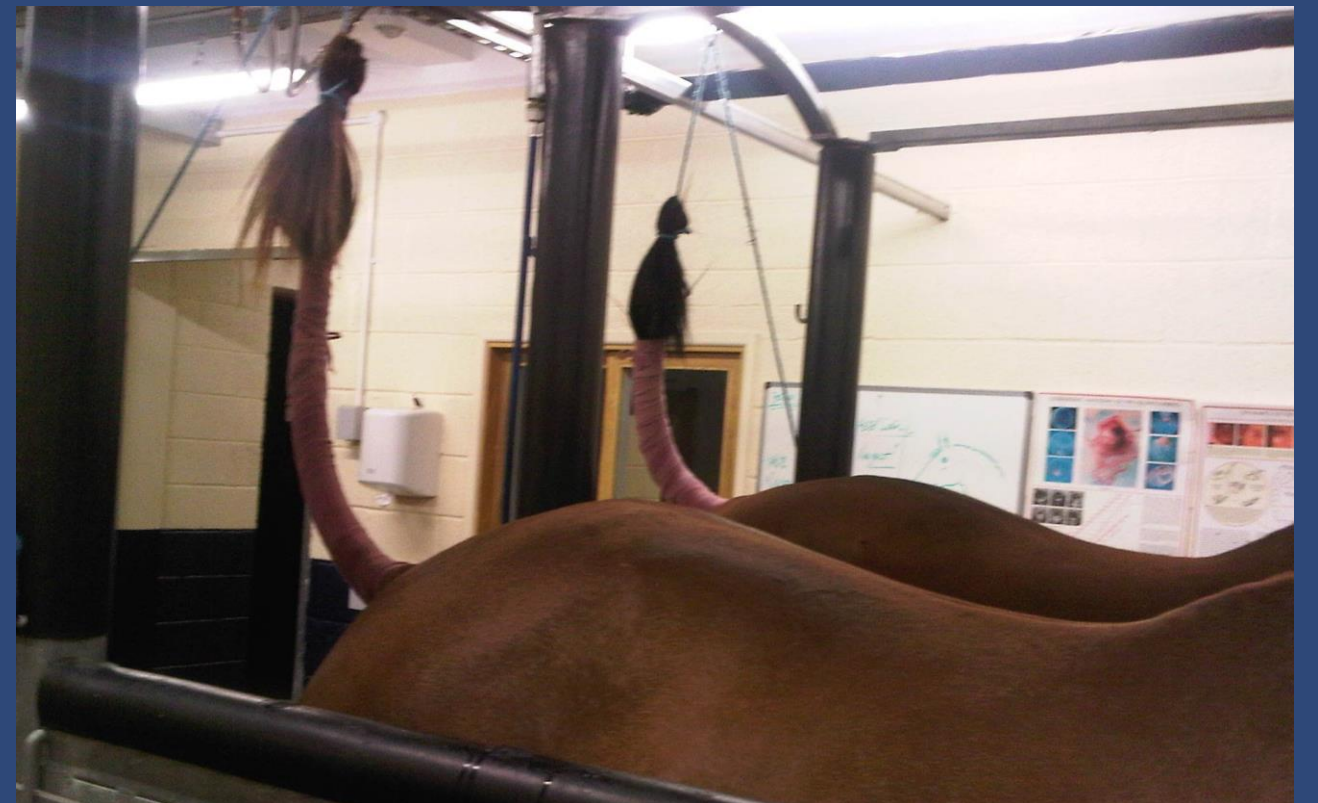
Tomlinson Equine Other Repro

Broodmare AI & Infertility Investigations

Predominantly our reproductive reputation lies with Equine Embryo Transfer, however our Artificial Insemination results speak for themselves. Each year we have breeders coming to Tomlinson Equine with mares who may have aborted or been difficult to get in foal. We have many success stories of where others have failed and we have succeeded.

We work with fresh, chilled and frozen semen. We have a number of Stallions standing at our centre as well as on a walk-in basis. We also work closely with a number of centres and services so we can receive chilled and frozen semen to the centre to inseminate your mare.

As an APHA approved centre we can import semen from all over the world, allowing you an unlimited choice of Stallions. We can also perform routine examinations at your yard, and AI onsite with Chilled semen.





01666 880236



info@tomlinsonequine.co.uk



www.tomlinsonequine.co.uk

Tomlinson Equine



Vet Practice & Stud

Livery Services

Our facilities meet the livery demands of both your highly valuable competition mare or breeding stallion and your equally valuable broodmare or pregnant recipient mare. Individual treatment, hygiene and ventilation are second to none, ensuring a healthy and happy horse throughout the duration of its stay. We can guarantee a livery package tailored to the individual needs of your horse including stabling, feeding, turnout and exercise to your specific requirements. We routinely isolate all new arrivals (individually or in groups) for 3 weeks to ensure we maximise our chances of minimising disease entry.



Long-Term Livery, Foaling Down, and Weaning

Tomlinson Equine offers an onsite foaling down service on a long-term basis for your mare. Pregnant mares can stay with us to foal down and remain with us, if required, until the foal is weaned. We provide a safe secure environment where mares are under constant supervision and can be monitored during the foaling down process. Tomlinson Equine also take in mares nearer their foaling date to foal down in a safe 24/7 monitored environment. We do require certain tests before the mare joins the centre, so please contact the office at least 12 weeks prior to the due date.

We have vets on site who can assist as and when necessary, before, during and after the foaling process. We offer a competitive pricing structure consisting of the foaling down service plus livery.





01666 880236



info@tomlinsonequine.co.uk



www.tomlinsonequine.co.uk

Tomlinson Equine



Vet Practice & Stud

Stallion Services

As an APHA approved centre for semen collections and freezing, we can collect both chilled and frozen export status semen on site. Our fresh & chilled semen collection service gives Stallion owners piece of mind when they bring their stallion to the centre either on a 'walk in' basis or to stand with us for the breeding season. The semen is processed in our semen lab and used as required: Inseminating residents mares; transporting to anywhere in the UK; exporting as chilled semen in Europe.

Stallions can either reside at Tomlinson Equine or Walk In for each semen collection. Collecting from your stallion is done in a secure, controlled, safe, purpose-built facility, with numerous highly trained staff on-site.



Stallion Training, Semem Freezing and Storage

Tomlinson Equine offer Stallion Training for young or untrained stallions. During the training your Stallion will be taught how to jump onto the dummy and ejaculate into an AV. His semen will be evaluated and you have the option to freeze the collections into doses. These can then be used for use on your own mares or marketed to be sold. We offer year round frozen semen storage.

Genetic Salvage

Should the worst happen to your valuable mare or stallion, we offer post-mortem Oocyte Recovery and post-mortem (or post castration) Epididymal Sperm Harvesting to allow you preserve their genetics after their death/castration.





01666 880236



info@tomlinsonequine.co.uk



www.tomlinsonequine.co.uk

Tomlinson Equine



Vet Practice & Stud

Ambulatory Vet Services

Based in the heart of the beautiful Beaufort Country in Westonbirt, Gloucestershire. Tomlinson Equine offer an ambulatory equine vet service which runs alongside our Stud & Reproduction Centre.

With extensive experience across multiple disciplines from pleasure horses to Olympic level performance horses, you can put your trust into our veterinary team to give you advice you can rely on. The Vets maintain a special interest in athletic performance, lameness, and reproduction to ensure they offer the latest advice in the veterinary industry. Tomlinson Equine can offer a full range of services, as an independent family business we are able to offer competitive and often better pricing on like for like Veterinary services.

Our Services Include:

- Vaccinations, Health Checks
- Lameness examinations, diagnostics and advanced level treatment options
- Pre-purchase and Insurance Examinations
- Export Health Certificates
- Worm egg counts and worming advice
- Treatment of medical conditions eg. Laminitis management programmes
- Emergency services for wounds, colic and other injuries.
- Sarcoid treatment and removal
- Routine Teeth Rasping with power dental equipment
- Portable Digital X-Ray, which enables us to provide instant images and advice at your yard.
- Portable Endoscopy
- Portable Ultrasound: High quality ultrasound images available to view at your yard
- Portable Shockwave Treatment
- Portable Laser Therapy
- Intra-lesional tendon and ligament injections (ultrasound guided)

